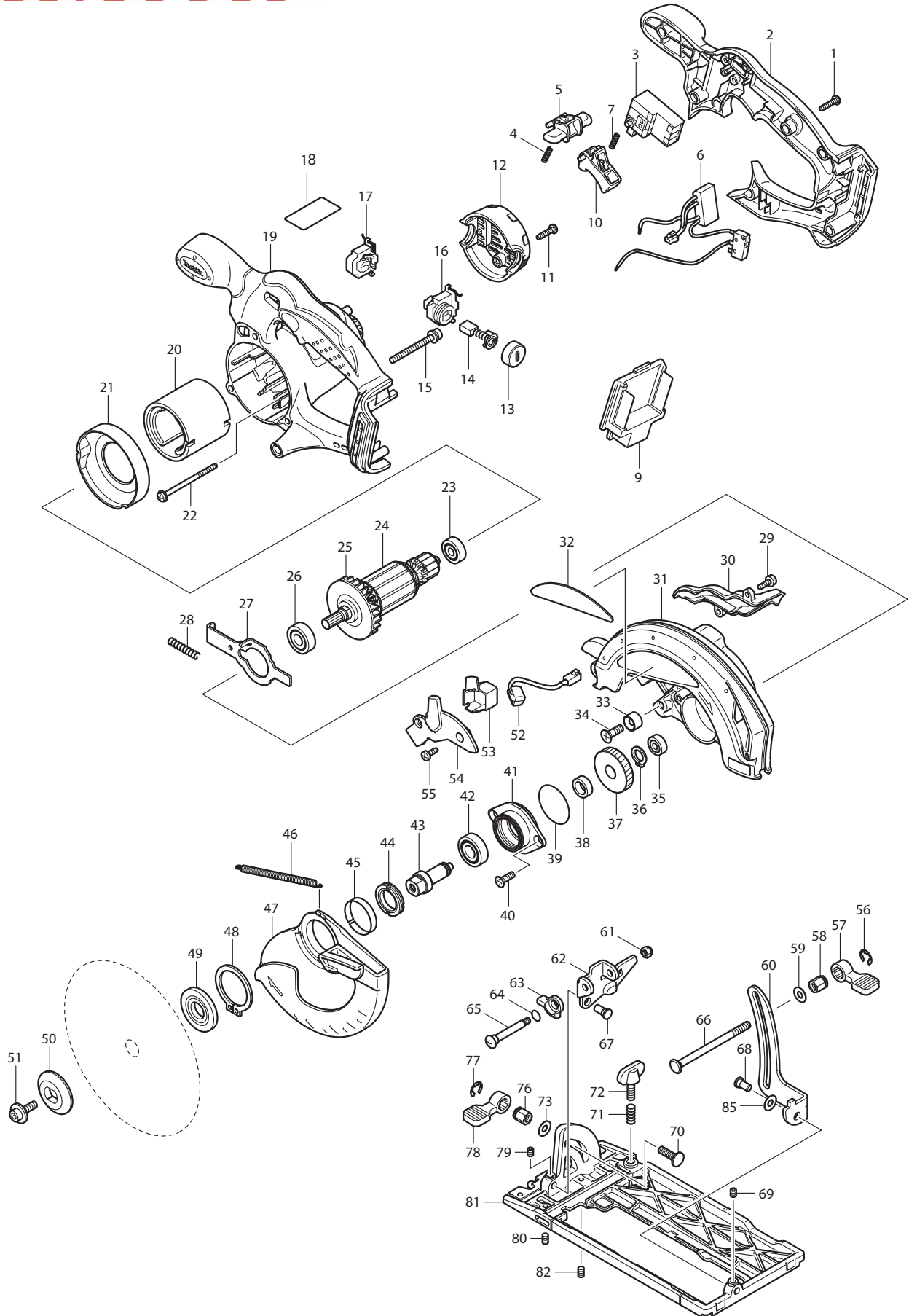




01 - 2014
DSS610F / DSS610RFE / DSS610Z
18V 6-1/2" CIRCULAR SAW



Item No	Type	Ref	Part No	Description	Qty	Unit
1			265995-6	TAPPING SCREW 4X18	6	PC.
2			141470-5	HANDLE COVER COMPLETE	1	PC.
3			650631-1	SWITCH	1	PC.
4			231469-9	COMPRESSION SPRING 4	1	PC.
5			419322-1	LOCK OFF LEVER	1	PC.
6			620088-0	POWER SUPPLY CIRCUIT	1	PC.
7			231469-9	COMPRESSION SPRING 4	1	PC.
9			644808-8	TERMINAL	1	PC.
10			419176-6	SWITCH LEVER	1	PC.
11			265995-6	TAPPING SCREW 4X18	2	PC.
12			419281-9	REAR COVER	1	PC.
13			643941-3	BRUSH HOLDER CAP	2	PC.
14			195022-4	CARBON BRUSH CB-441, 2PCS/SET, W/ORIGIN	1	SET
15			911263-2	PAN HEAD SCREW M5X40	3	PC.
16			643895-4	BRUSH HOLDER	1	PC.
17			643896-2	BRUSH HOLDER	1	PC.
18			815E89-3	NAME PLATE F/DSS610	1	PC.
19			142460-1	v MOTOR HOUSING COMPLETE	1	PC.
	INC.		802U29-6	v CAUTION LABEL	1	PC.
20			638107-8	YOKE UNIT	1	PC.
21			419285-1	BAFFLE PLATE	1	PC.
22			266292-3	TAPPING SCREW 4X65	2	PC.
23			210023-2	BALL BEARING 627DDW	1	PC.
24			519173-3	ARMATURE ASS'Y 18V	1	PC.
	INC.			Item No. 23,25,26		
25			241869-5	FAN 55	1	PC.
26			211061-7	BALL BEARING 6000LLB	1	PC.
27			346059-6	SHAFT LOCK	1	PC.
28			233092-6	COMPRESSION SPRING 5	1	PC.
29			911118-1	PAN HEAD SCREW M4X12	2	PC.
30			419284-3	BLOWER NOZZLE	1	PC.
31			188045-9	BLADE CASE SET	1	PC.
	INC.		213434-0	O RING 26	1	PC.
	INC.			Item No. 32		
32			819217-2	MAKITA LOGO PLATE	1	PC.
33			262049-0	RUBBER RING 6	1	PC.
34			251368-9	+ COUNTERSUNK SCREW M6	1	PC.
35			210028-2	BALL BEARING 606ZZ	1	PC.
36			961052-5	RETAINING RING S-12	1	PC.
37			227156-6	SPUR GEAR 52	1	PC.
38			257173-2	RING 12	1	PC.
39			213512-6	O RING 39	1	PC.
40			265034-2	+ COUNTERSUNK HEAD SCREW M5X16	2	PC.
41			318009-1	BEARING BOX	1	PC.
42			211131-2	BALL BEARING 6001DDW	1	PC.
43			324626-7	SPINDLE	1	PC.
44			285845-9	BEARING RETAINER 19-29	1	PC.
45			345469-4	THICKNESS RING	1	PC.
46			231821-1	TENSION SPRING 3	1	PC.
47			419280-1	SAFETY COVER	1	PC.
48			961152-1	RETAINING RING (EXT) S-34	1	PC.
49			224151-7	INNER FLANGE 40	1	PC.
50			224275-9	OUTER FLANGE 40	1	PC.
51			266133-3	HEX. SOCKET HEAD BOLT M6X20	1	PC.
52			631694-6	LED CIRCUIT	1	PC.
53			419341-7	CONNECTOR BOX	1	PC.
54			419282-7	LIGHT COVER	1	PC.

Item No	Type	Ref	Part No	Description	Qty	Unit
55			266026-4	TAPPING SCREW BIND CT 4X12	2	PC.
56			961014-3	STOP RING E-8	1	PC.
57			272229-0	LEVER 40	1	PC.
58			252158-3	HEX.NUT M6	1	PC.
59			941151-9	FLAT WASHER 6	1	PC.
60			345658-1	DEPTH GUIDE	1	PC.
61			252103-8	HEX. LOCK NUT M5-8	1	PC.
62			345657-3	ANGULAR GUIDE	1	PC.
63			317986-4	STOPPER	1	PC.
64			213062-1	O RING 9	1	PC.
65			265084-7	+ TRUSS HEAD SCREW M5	1	PC.
66			266194-3	FLAT HEAD SCREW M6X90	1	PC.
67			256480-0	SHOULDER PIN 6-7	1	PC.
68			256480-0	SHOULDER PIN 6-7	1	PC.
69			266264-8	H.S.SET SCREW(FLAT POINT)M5X6	1	PC.
70			251919-8	CAP SQUARE NECK BOLT M6X20	1	PC.
71			231007-7	COMPRESSION SPRING 6	1	PC.
72			251896-4	SCREW M5X20	1	PC.
73			941151-9	FLAT WASHER 6	1	PC.
76			252133-9	HEX. NUT M6	1	PC.
77			961014-3	STOP RING E-8	1	PC.
78			272251-7	LEVER 30	1	PC.
79			266264-8	H.S.SET SCREW(FLAT POINT)M5X6	1	PC.
80			266229-0	H.S.SET SCREW(CUP POINT)M5X8	1	PC.
81			154831-0	BASE COMPLETE	1	PC.
		INC.	816850-1	SCALE PLATE	1	PC.
82			266229-0	H.S.SET SCREW(CUP POINT)M5X8	1	PC.
85			253186-1	FLAT WASHER 7	1	PC.
D01			654509-0	CONNECTOR 2-SD	2	PC.
D02			654208-4	RECEPTACLE	2	PC.
100			620258-1	CONTROLLER	1	PC.
101			911118-1	PAN HEAD SCREW M4X12(F/Dust Nozzle)	1	PC.
<u>ACCESSORIES</u>				- See Catalogue or visit www.makita.ca for more accessories information -		
A01			164095-8	GUIDE RULE	1	PC.
A02			-----	BATTERY CHARGER		
A03			-----	18V LI-ION BATTERY		
A04			783203-8	HEX. WRENCH 5	1	PC.
A05	1		824757-7	PLASTIC CARRYING CASE	1	PC.
		INC.	163455-1	LATCH	2	PC.
		INC.	419360-3	HANDLE	1	PC.
	2		141353-9	PLASTIC CARRYING CASE	1	PC.
		INC.	163455-1	LATCH	2	PC.
		INC.	419360-3	HANDLE	1	PC.
A06			A-85092	6-1/2" C.T.SAW BLADE 24T (5/8")	1	PC.
A07			P-80012	DUST NOZZLE	1	PC.
A08			-----	LI-ION BATTERY ACCESSORIES		